



Manhole Covers Ireland

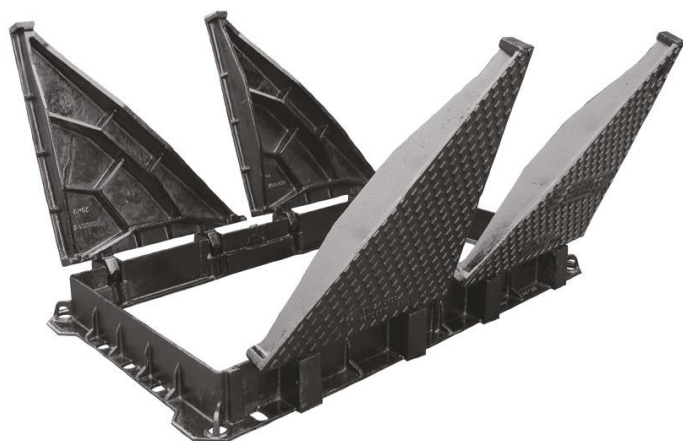
We cover everything!

Lowpark, Charlestown, Co. Mayo, Ireland.

Phone: 094 9033022 Fax: 094 9254970

Email: info@mhcireland.com Web Site: www.mhcireland.com

T Range Hinged & Locked D400 C & F



Product Code	Overall Size	Clear Opening	Frame Height	Waterway Area	Certification
MH-D-T50-70	830 x 700mm	700 x 500mm	100mm	N/A	ICIM
MH-D-T76-40	950 x 520mm	760 x 400mm	100mm	N/A	ICIM
MH-D-T60-60	800 x 730mm	600 x 600mm	100mm	N/A	ICIM
MH-D-T60-120	800 x 1400mm	600 x 1200mm	100mm	N/A	ICIM
MH-D-T75-90	1100 x 910mm	900 x 750mm	100mm	N/A	ICIM
MH-D-T75-214	2275 x 950mm	2140 x 750mm	100mm	N/A	ICIM
MH-D-T76-120	1330 x 960mm	1200 x 760mm	100mm	N/A	ICIM
MH-D-T80-70	1000 x 830mm	800 x 700mm	100mm	N/A	ICIM
MH-D-T90-60	1030 x 800mm	900 x 600mm	100mm	N/A	ICIM
MH-D-T90-90	1030 x 1100mm	900 x 900mm	100mm	N/A	ICIM
MH-D-T106-70	1190 x 900mm	1060 x 700mm	100mm	N/A	ICIM

FRAME

It is realized in a single cast, it can be opened by rectangular or triangular section covers with double hinges, with the aim of having free access to 2/3 sides. Externally, the outside border is flanged in order to optimise its hold in the cement and it has specific holes for the insertion of the anchoring bolts.

COVERS

It comes triangular in shape, it is hinged to the frame with top opening of 110°. At 90° it assumes the automatic safety blocking position and can be removed without disassembling the hinge. This method allows partial and sequential opening with a coupling system placed on the edges, which reduces the infiltration of water. The master half cover section is provided with a stainless steel lock, operable using a special shaped key which guarantees safety and prevents the opening of the manhole covers by Unauthorised personnel. Furthermore the key becomes a comfortable handle for opening and closing the cover. The upper surface is designed to be non-skid to allow the complete flow of water and avoid the creation of ice.

INTENDED USE

it is designed for footpaths and parking areas for all types of road vehicles (see norm EN 124 group 4)

TREATMENT

The manhole cover has a protective coating of black paint.