



Manhole Covers Ireland

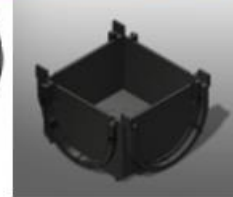
We cover everything!

Lowpark, Charlestown, Co. Mayo, Ireland.

Phone 071 91 79001 Fax 094 925 4970

Email: info@mhcireland.com web Site www.mhcireland.com

4ALL HDPE Channel and B125 Ductile Iron Grating



Sump

End Caps

Corner Unit

8mm Pedestrian Friendly Grating

Product Code	Length	Height Overall	Width Overall	Loading	Certification	Grating TYPE
MH-DC-613030	1000mm	92mm	120mm	B125	CE	Ductile
MH-DC-513200	2 End Caps and 1 Outlet Pack					
MH-DC-613230	Corner Unit with Ductile Grating					
MH-DC-613031	Sump Unit Bottle Gully					

FEAT URES:

- Click the grating in and out, no screws required.
- Designed in accordance with EN 1433.
- Easy to assemble.
- The smooth waterproof surface allows a quick water flow drainage.
- The external structure with ribs improves the anchoring between concrete and Polymor Concrete and is designed for a better strength and rigidity of the channel.
- High mechanical and chemical resistance.
- Lightweight.
- Easy to carry.

The drainage HDPE Plastic channels, the gratings and covers in ductile iron made by Mufle are certificated in conformity with the EN 1433 Norm "drainage channels for pedestrian and vehicular areas". The certification ensures the consumer that the quality procedures have been achieved in compliance with the specific requirements of the European directives and that all the units are submitted to periodic tests as per the EN 1433 Norm.

The **CE** marking identifies the certification assessment procedure and is marked on all the channels distributed on the market in compliance with the safety requirements.